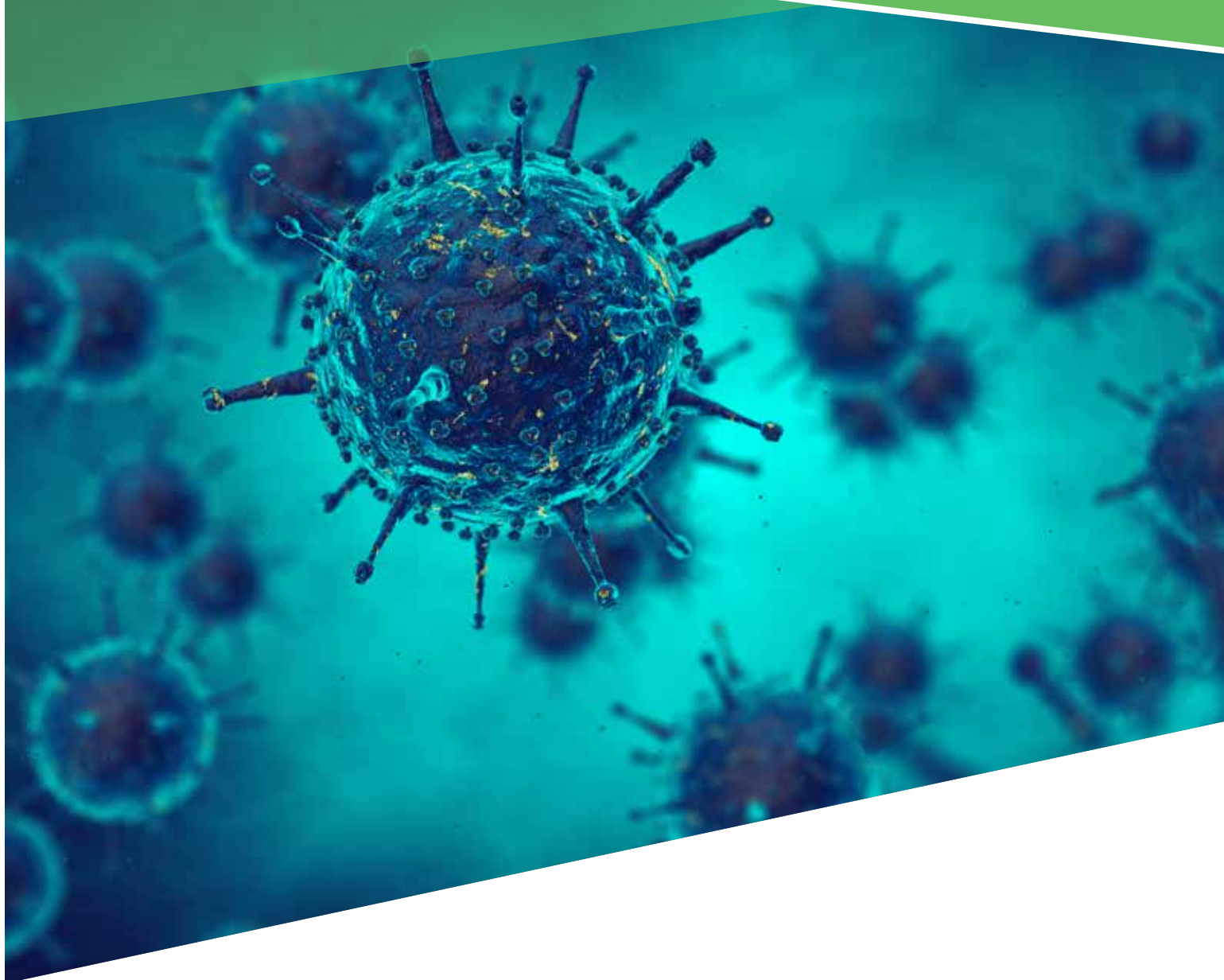


In Focus

BioThreat's Lasting Effects



PACER ETFs

877-337-0500 ■ www.paceretfs.com

Not FDIC Insured

May Lose Value

Not Bank Guaranteed

Preparation for the Unknown

Viral and biological outbreaks and their effects are a reality that, until recently, were not top of mind for many. After Covid-19, entire businesses and economies will change to account for the chance of this occurring again.

The LifeSci BioThreat Strategy Index seeks to gain exposure to companies that, in their normal operations, provide their goods and services to the market through accomplishing one or more of the following themes.

Understanding the Index

In looking at what could pose as a biothreat, there are seven main areas of investing that the LifeSci BioThreat Strategy Index aims to include:

1. Research of current and future pandemics.
2. Combat agents of biological warfare.
3. Detect the presence of biological threats.
4. Secure national borders and ports and strengthen homeland security.
5. Aid in stockpiling of products needed in times of natural disasters and disease outbreaks.
6. Improve food and water safety and purity.
7. Enable technology to benefit work and stay at home mandates.

1

LifeSci BioThreat Strategy Index

The U.S. equity market is screened for companies aimed at protecting people and nations from biological threats to safety and health.

2

Sector Screen

Qualified companies are screened based on sector and industry, and must meet a minimum market cap of \$1 billion and certain minimum liquidity measures.

3

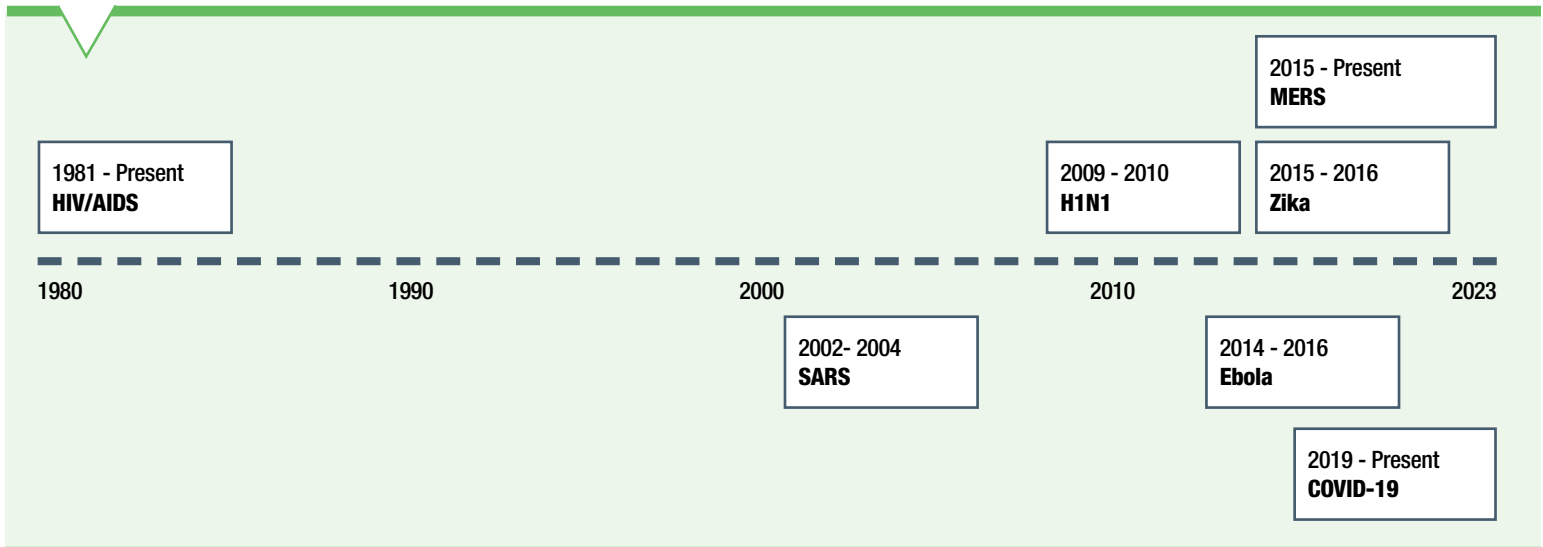
The Index

The Index is reconstituted and rebalanced semi-annually. Ongoing research in the field of biological threats is conducted on a monthly basis to determine if any additional changes are merited. Names are weighted based on modified market cap subject to a 4.9% cap.

Understanding Past Pandemics

Looking back at past pandemics and their impact not only on the population, but on the economy at large, may help in understanding the benefit of investing in companies before disaster strikes.

Epidemic/Pandemic Timeline



A New Way of Life

Even after a pandemic has run its course, permanent trends have developed in preparation for the next outbreak, whether that be of the same pandemic or a new one. Think back to before COVID-19 and ask yourself, has your attention and focus changed on any of the below since before the pandemic?

Long-Term Trend	Personal Hygiene: Hand washing, cleaning supplies	BioShares BioThreat Index Holding (as of 12/31/2023)	CVS Health Corporation; Walgreens Boots Alliance, Inc.; Haleon plc
	Sanitation: Wipe down public transportation seating, disinfect work space		Kimberly-Clark Corp; Clorox Company; Church & Dwight Co., Inc.
	Social Distancing: Work and live from home through online video conferencing and streaming services		Lowe's Companies, Inc.; NVIDIA Corporation; Amazon.com, Inc.; Home Depot, Inc.
	Preparation: Emergency supplies readily available		Johnson & Johnson; Walmart, Inc.; Ecolab, Inc.; 3M Company
	Research and Testing: Continuous work to find vaccines and possible future biothreats		Merck & Co., Inc.; Thermo Fisher Scientific, Inc.; Danaher Corporation; Abbott Laboratories; Sanofi; Gilead Sciences, Inc.; Regeneron Pharmaceuticals Inc.; Moderna, Inc.

From individual households to larger governments, no one wants to be caught off guard once again. The LifeSci BioThreat Strategy Index aims to capture these trends.

Speak with your financial advisor today to learn how to best incorporate the Pacer BioThreat Strategy ETF (VIRS) into your portfolio.
For more information, visit www.paceretfs.com.

Before investing you should carefully consider the Fund's investment objectives, risks, charges, and expenses. This and other information is in the prospectus. A copy may be obtained by visiting www.paceretfs.com or calling 1-877-337-0500. Please read the prospectus carefully before investing.

An investment in the Funds is subject to investment risk, including the possible loss of principal. Pacer ETF shares may be bought and sold on an exchange through a brokerage account. Brokerage commissions and ETF expenses will reduce investment returns. There can be no assurance that an active trading market for ETF shares will be developed or maintained. The risks associated with this fund are detailed in the prospectus and could include factors such as concentration risk, ETF risks, equity market risk, index calculation methodology risk, index criteria risk, large and mid-capitalization investing risk, non-diversification, passive investment risk, pharmaceutical companies risk, sector risk, tracking risk, and/or special risks of exchange traded funds.

The LifeSci BioThreat Strategy Index is a trademark of LifeSci Index Partners, LLC ("LSIP") and has been licensed for use by Pacer Advisors, Inc. The Pacer BioThreat ETF (CBOE: VIRS) is not sponsored, endorsed, sold or promoted by LifeSci Index Partners, LLC and LSIP makes no representation or warranty regarding the advisability of investing in the Pacer BioThreat ETF.

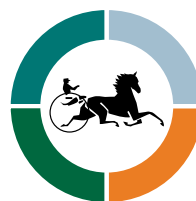
© 2024, Pacer Financial, Inc., All rights reserved.

Distributor: Pacer Financial, Inc., member FINRA, SIPC, an affiliate of Pacer Advisors, Inc.

NOT FDIC INSURED | MAY LOSE VALUE | NOT BANK GUARANTEED

PCR200624_VIRSB

12/31/23



PACER ETFs

877-337-0500 ▪ www.paceretfs.com